



Flat

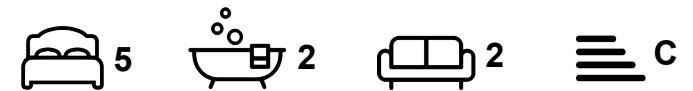
# FLAT 15, HEADINGLEY RISE WELTON ROAD, HYDE PARK, LEEDS, LS6 1EE

Per Week

## £425 Per

### FEATURES

- 5 Bedrooms
- Hyde Park
- Gas C/H
- Flat
- Furnished Property



**SJM** ©  
**PROPERTIES**

# 5 Bedroom Flat located in Leeds

Call us on

**01132782201**

**phil@sjm-properties.com**

**sjm-properties.com**

**Council Tax Band**

**B**

Newly decorated with new bathrooms.

Gated complex with gated off street parking.

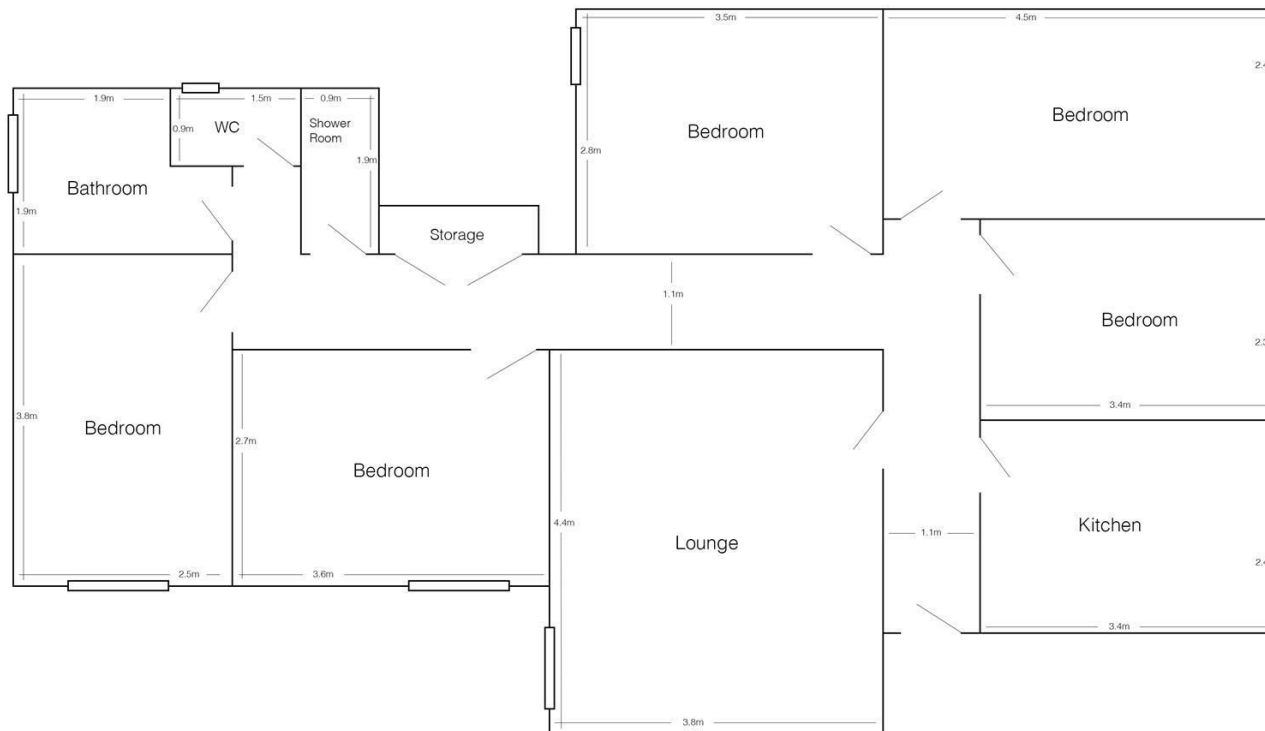
large lounge with new wood floor and media wall with wall mounted TV.

All double bedrooms furnished with robe, desk, drawers and a chair as well as a bed.

Gas central heated and double glazed in a great location close to the Uni and Brudenell shops

RENT OF £109 PER PERSON PER WEEK INCLUDES UTILITY BILLS

15 Headingley Rise  
(drawing not to scale)



| Energy Efficiency Rating                    |                         |           |
|---|-------------------------|-----------|
|   | Current                 | Potential |
| Very energy efficient - lower running costs |                         |           |
| (92 plus) <b>A</b>                          |                         |           |
| (81-91) <b>B</b>                            |                         |           |
| (69-80) <b>C</b>                            | 73                      | 76        |
| (55-68) <b>D</b>                            |                         |           |
| (39-54) <b>E</b>                            |                         |           |
| (21-38) <b>F</b>                            |                         |           |
| (1-20) <b>G</b>                             |                         |           |
| Not energy efficient - higher running costs |                         |           |
| <b>England &amp; Wales</b>                  | EU Directive 2002/91/EC |           |

Agents Note: Whilst every care has been taken to prepare these particulars, they are for guidance purposes only. All measurements are approximate and are for general guidance purposes only and whilst every care has been taken to ensure their accuracy, they should not be relied upon and potential buyers are advised to recheck the measurements.

**SJM** <sup>©</sup>  
**PROPERTIES**